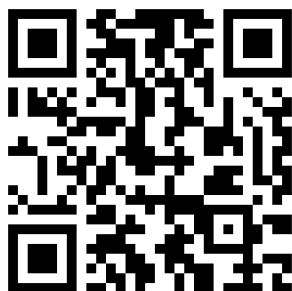
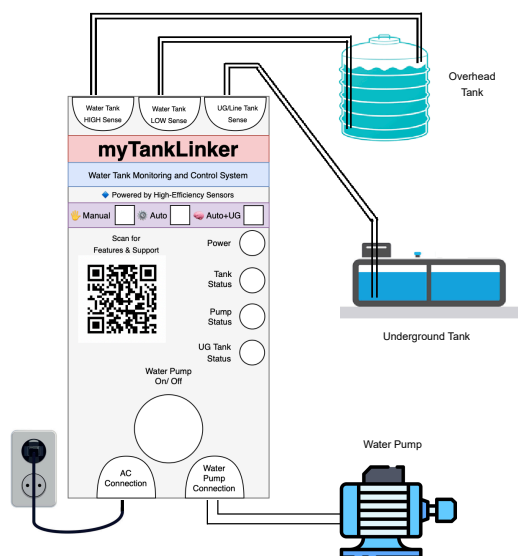


Connection Manual

myTankLinker: Auto+UG Edition

– Automatic Tank Monitoring with Manual Pump Control

Smart Dual-Tank Logic with Dry-Run Protection — Sensor-Driven Precision



Scan to Learn More About Your Product

→ See detailed info, features, manuals, and guides for all myTankLinker editions.

Connection Manual (myTankLinker: Auto+UG Edition)

– Automatic Tank Monitoring with Auto Pump Control
Smart Dual-Tank Logic with Dry-Run Protection — Sensor-Driven Precision

Step-by-Step Installation Guide

1. Mount the Device

- Mount the myTankLinker unit near the pump in a **dry and protected** indoor area.
- Ensure the wiring from the overhead tank, underground tank (UG), and pump can reach the unit.

2. Connect the Sensors

- Use a **3-core wire** (or multiple wires) to connect all 3 sensors:
 - HIGH Sense** → Top level of the overhead tank
 - LOW Sense** → Minimum water level in the overhead tank
 - UG/Line Tank Sense** → Place inside the **underground tank**, at the minimum safe water level.

⚠ Important:

⚠ When water falls **below this sensor**, it indicates the **UG tank is empty**, and the system prevents dry-run by disabling pump start.

💡 All three sensors are essential for safe and accurate operation in this edition.

3. Connect the Water Pump

- Locate the **Water Pump Connection** terminal.
- Connect the **live and neutral wires** of the water pump securely.
- Use proper insulation and crimp lugs for safe electrical contact.

4. Connect to AC Power

- Wired the **AC Connection** terminal to a **230V AC outlet**.
- Ensure the switch is **OFF** before making the connection.

5. Verify Status LEDs

Once powered ON:

- Power LED:** Lights up when powered.
- Tank Status LED:**
 - ON** = Overhead tank is full
 - OFF** = Tank is not full
- Pump Status LED:**
 - ON** = Pump is running
 - OFF** = Pump is off
- UG Tank Status LED:**
 - ON** = UG tank is **empty** or **below safe level** (⚠ dry-run prevention active)
 - OFF** = UG tank has **sufficient water** and is ready for pump operation

⚙ Working Logic – Auto+UG Edition

- The system **automatically starts the pump** when:
 - Overhead tank is **below LOW level**, and
 - UG tank has **enough water**.
- The system **automatically turns off the pump** when:
 - Overhead tank reaches **HIGH level**, or
 - UG tank becomes **empty** (dry-run protection).
- If power is interrupted, the **previous pump state is remembered** on reboot.
- Built-in logic ensures both tanks are monitored using **high-efficiency sensors** to prevent overflow and dry-run damage.

📄 Scan the QR Code to Access:

- 💎 Full User Manual
- 💎 Other myTankLinker Products
- 💎 Troubleshooting Guide
- 💎 Setup Video Tutorial

⚠ Safety Precautions

- Do **not touch** the unit with wet hands.
- Disconnect power** before rewiring or opening the device.
- Avoid exposure to **direct sunlight** or **water**.
- Always **wear insulated footwear** during installation or servicing.